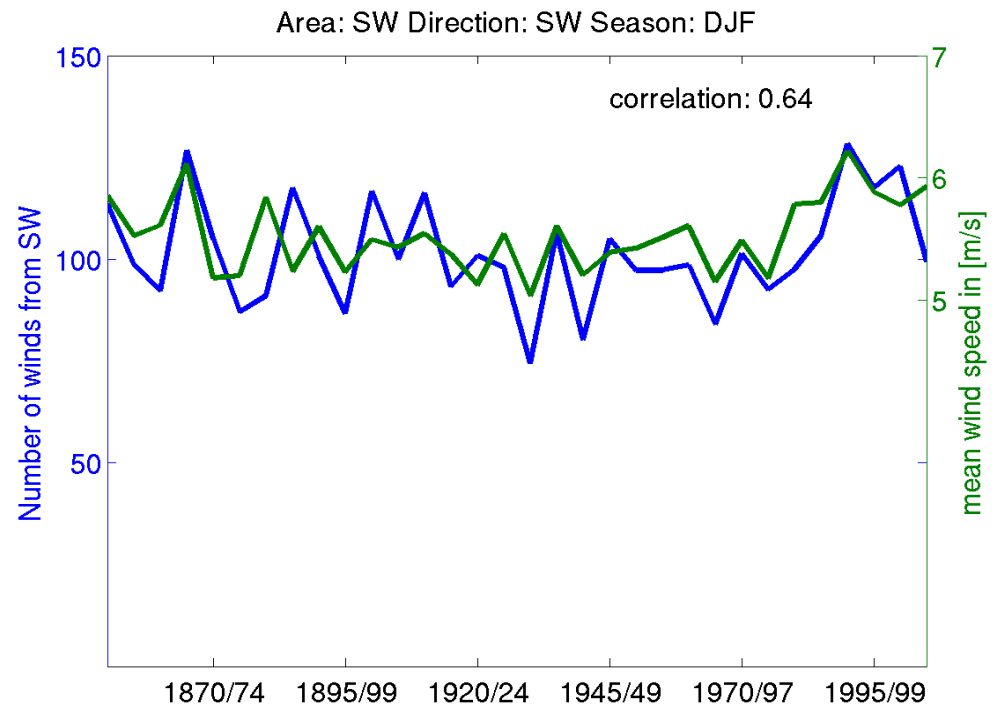
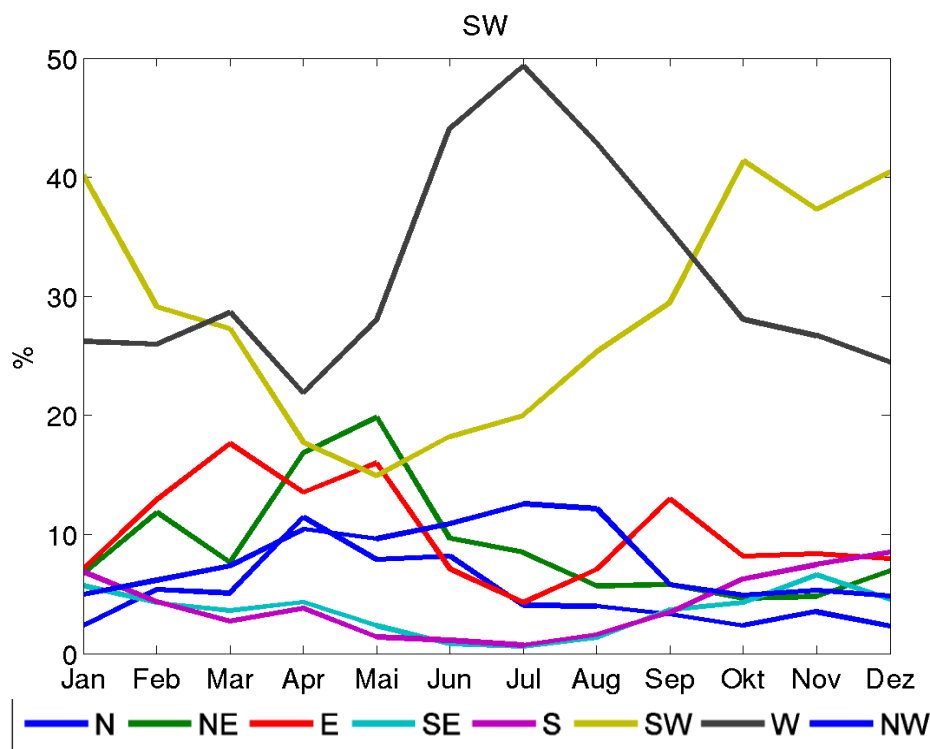


# The variability of western and south-western wind extremes over the Baltic Sea.



- Wind direction frequency per month, for wind events exceeding the 95<sup>th</sup> percentile of wind speed.
- Predominant wind directions during the whole year: SW & W

- Frequencies (5 year sum) of SW winds correlate with mean (5 year) wind speed.
- Statistical significant correlations only for W & SW.
- More westerlies denote stronger mean wind speeds.

- No long term trend in frequencies of extreme SW/W winds, but a significant increase from early 1970<sup>th</sup>-1990.
- Long term variability of extreme westerlies can be related to long term variability of SLP patterns.