

Direct radiative effect of wildfire smoke on a severe thunderstorm event in the Baltic Sea Region

Velle Toll [velle.toll@ut.ee]

Aarne Männik [aarne.mannik@ut.ee]



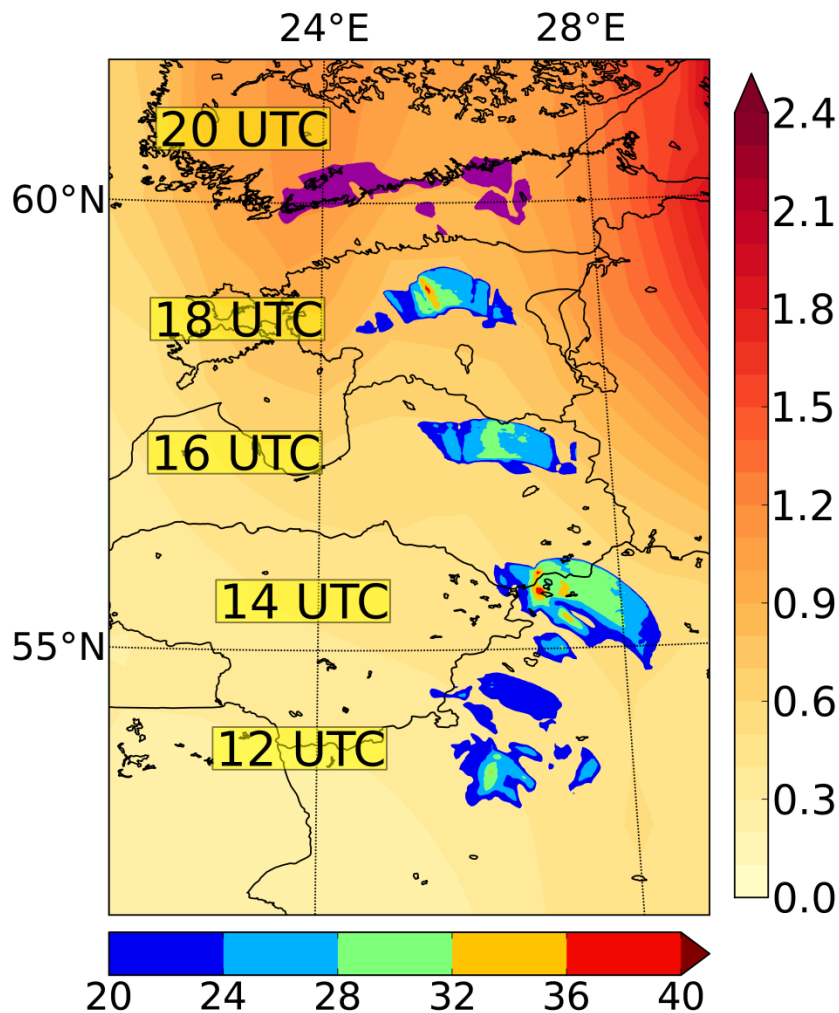


Figure 1. Storm path as determined by the simulated 10-m wind gusts (m/s).

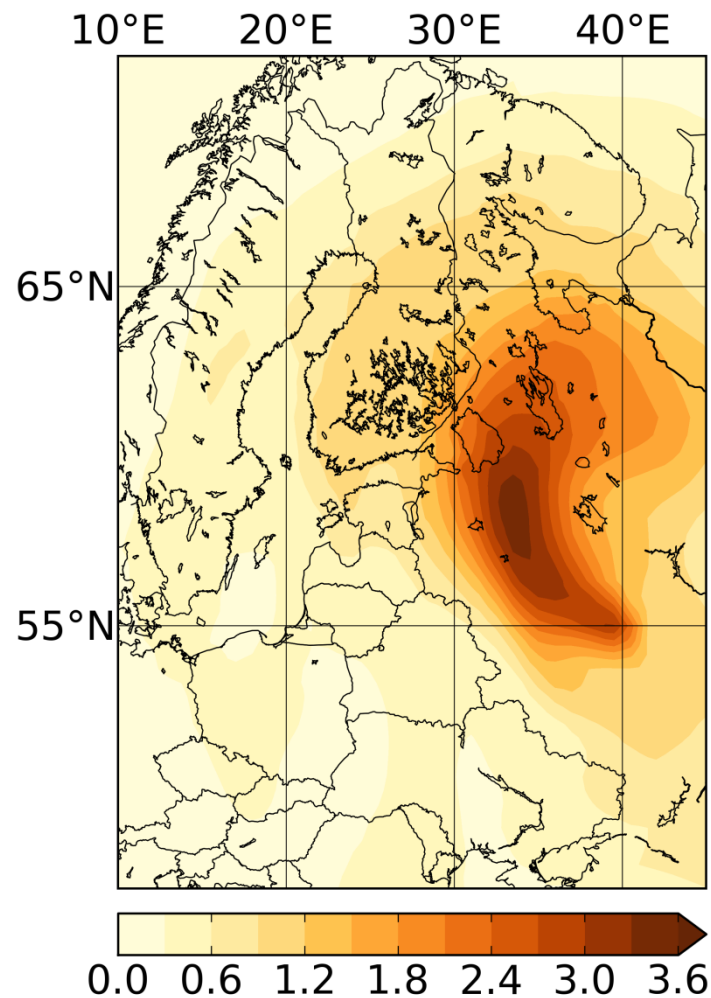


Figure 2. 24h average total aerosol optical depth 08.08.2010 (Huijnen et al., 2012).

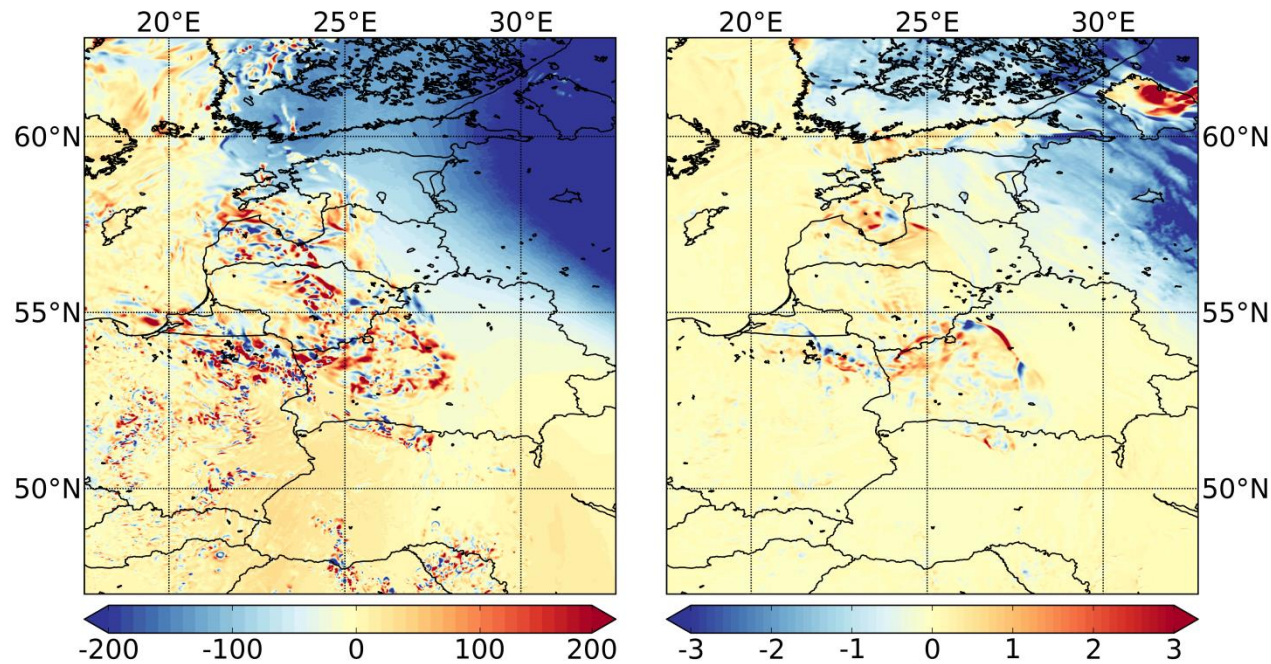


Figure 3. Shortwave radiation flux difference (W/m^2) and temperature difference ($^{\circ}\text{C}$) near ground (+12h simulation).

Figure 4. Simulated 10-m wind gusts (m/s) without and with smoke aerosol influence (+18h simulation).

